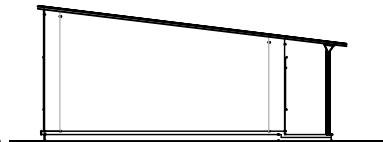
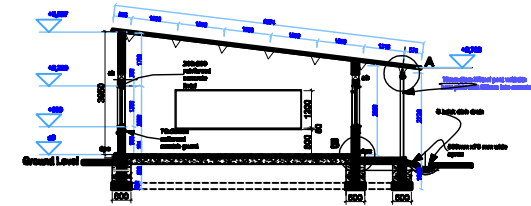


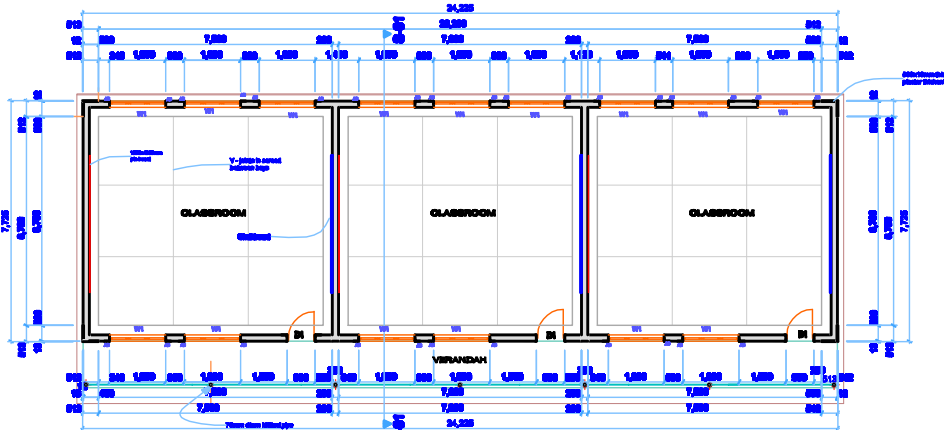
FRONT ELEVATION



SIDE ELEVATION

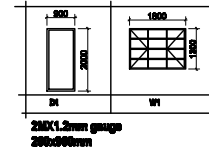


SECTION So1



FLOOR PLAN

DOOR AND WINDOW SCHEDULE



250x1.2mm gauge
200x200mm



400X400mm Concrete pad stone detail

NOTES

IT4 roofing sheet 0.5mm gauge bolted to spider trusses type ST 250 as per manufactures specifications
Spider truss cast in concrete pad size 400x400, and tied down with 3 strands of soft wire down to the third course

200mm burnt brick wall, reinforced with brick force every fourth course, rendered with 18mm sand cement plaster (1:4) Internally and externally

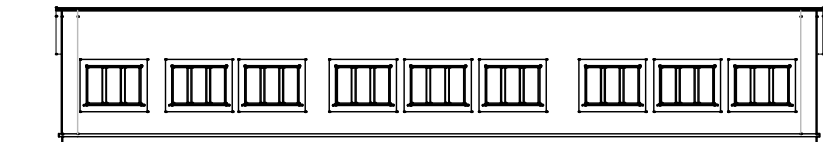
1x undercoat and two finishing coats PVA external quality paint

1x under coat and two finishing coats gloss paint to 2.2mm height above FF level, 2 finishing coats PVA above ring beam internally

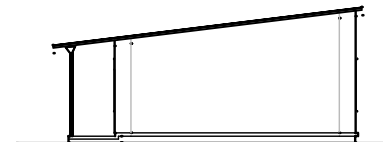
38mm sand cement screed cast in bays as on plan on 100mm concrete slab reinforced with con-formex 88 mesh cast on dump proof membrane on 200mm compacted hard core

Solid 200mm concrete blocks reinforced with brick force wire every second course

200x200mm concrete strip foundation in ration 1:2:4

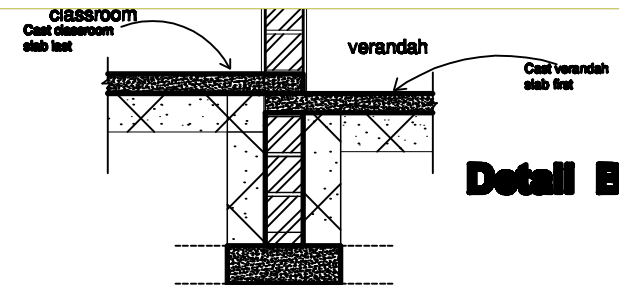
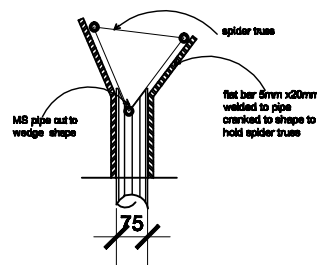


REAR ELEVATION



SIDE ELEVATION

Detail A



Detail B

REVISIONS					
1					
2					
3					
4					
5					
6					
7					
8					
9					
10					
11					
12					
13					
14					
15					
16					
17					
18					
19					
20					
21					
22					
23					
24					
25					
26					
27					
28					
29					
30					
31					
32					
33					
34					
35					
36					
37					
38					
39					
40					
41					
42					
43					
44					
45					
46					
47					
48					
49					
50					
51					
52					
53					
54					
55					
56					
57					
58					
59					
60					
61					
62					
63					
64					
65					
66					
67					
68					
69					
70					
71					
72					
73					
74					
75					
76					
77					
78					
79					
80					
81					
82					
83					
84					
85					
86					
87					
88					
89					
90					
91					
92					
93					
94					
95					
96					
97					
98					
99					
100					

STATUS: Approved

Client
GOVERNMENT OF ZAMBIA
 Ministry of Education

Project Title
STANDARD 1X3 CLASSROOM BLOCK FOR HIGH SCHOOL

Drawing Title
 Floor plan, Elevations, Section

Job Number 12/2013	Date 20.12.13
Drawing Number ST-01	Rev -
Architect L.S. MUBONDA	Checked J. F. NTHELE